

# SOUTHLAND TOOL MFG. INC.

Building Innovative Tools for Municipalities

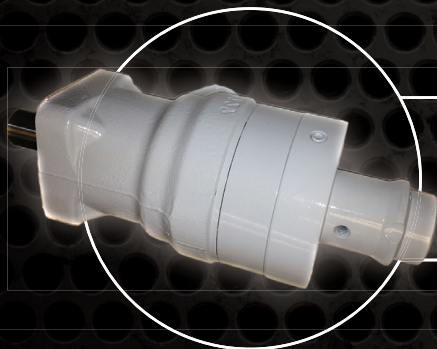
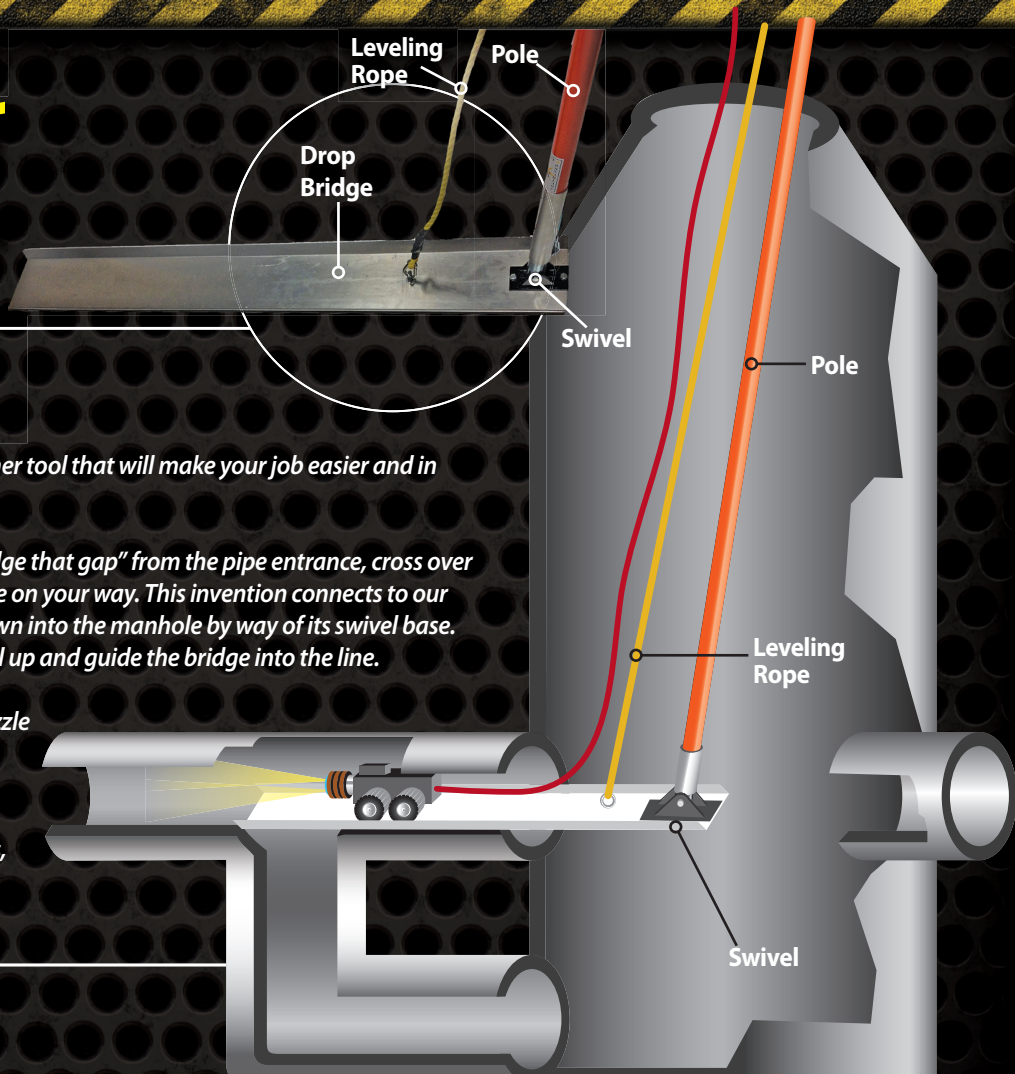


## NEW PRODUCT from the innovators in Sewer Cleaning Tool and Accessories.

Southland Tool once again presents yet another tool that will make your job easier and in some cases possible for the 1st time.

**The Drop Manhole Bridge** is designed to "bridge that gap" from the pipe entrance, cross over the Drop down pipe, and allow you to continue on your way. This invention connects to our Fiberglass pole system and lowers straight down into the manhole by way of its swivel base. With the included leveling rope you simply pull up and guide the bridge into the line.

At this point you can lower your camera or nozzle on to the bridge and insert it forward over the drop. Made to 6" width or wider they easily fit into a 8" or larger pipe. Made of aluminum it is lightweight and once detached from our poles, easy to store. Part no. DMB-1



**Hi-Torque Hydraulic Root Cutter Motor.** This reliable and super strong hydraulic cutter has a 9.1 cubic inch displacement, more than any cutter on the market. This motor grinds and rips through roots, cement, calcium and more. Get ready to bring a lot of material back to the manhole. Combined with our EZ-skids and variety of cutting tools, you will have a arsenal of weapons in your tool box.

Southland tools also carries a large inventory of other items including:

- SEWER RODS • DEBRIS BASKETS • GRABBERS • HANDY CLAMS • CORKSCREWS • AUGERS •
- NOZZLE EXTENSIONS • HYDRO CUTTERS • SPOONS • DEEP-VAC HOLDERS & more!